




Maximize Existing Extraction, Investigative and Intelligence Techniques

Assessments: Cell Detect™ and Cell Intel™	Mobile Managed Access	Fixed Managed Access
 <p style="color: red; font-weight: bold; font-size: 24px;">\$</p> <ul style="list-style-type: none"> • Covert, on-site assessment; no installation required • Detects unauthorized devices • Cell Intel: <ul style="list-style-type: none"> ◦ Prevents and logs unauthorized device communications ◦ Report provides intelligence data - phone # dialed and text message attempts 	 <p style="color: red; font-weight: bold; font-size: 24px;">\$\$</p> <ul style="list-style-type: none"> • Cell Intel Assessment, plus: <ul style="list-style-type: none"> ◦ Dedicated system and technicians to operate at the Agency's discretion. 	 <p style="color: red; font-weight: bold; font-size: 24px;">\$\$\$</p> <ul style="list-style-type: none"> • Fixed installation for an institution using a permanently installed Distributed Antenna System (DAS) via a multi-use fiber infrastructure • Systematically stops communications for unauthorized devices • Intelligence reports available via Client User Interface
Temporary		Permanent
Mobile - Movable, Repeatable		Expandable
Passive or Active Functionality		

Mobile Cellular Interdiction Capabilities	Assessments		Mobile Managed Access
	Cell Detect	Cell Intel	
Temporary; permanent installation not required	✓	✓	✓
Covertly identify your contraband cell phone problem	✓	✓	✓
Increase effectiveness of existing extraction and investigative techniques	✓	✓	✓
Collect actionable data used to extract contraband devices		✓	✓
Flexible - dedicated equipment and team to deploy as you require (annually)			✓

Cell Intel: A Case Study

Setup and Operation

Cell Intel equipment is setup in a covert area and operated typically in the late evening hours.

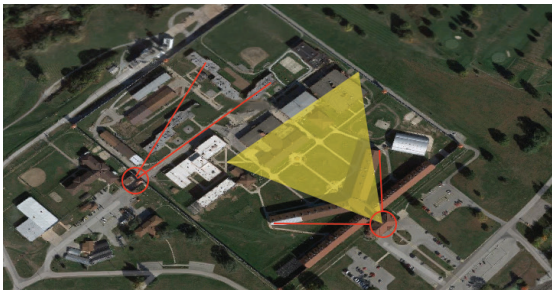


Directional antenna setup in tower pointing toward targeted area

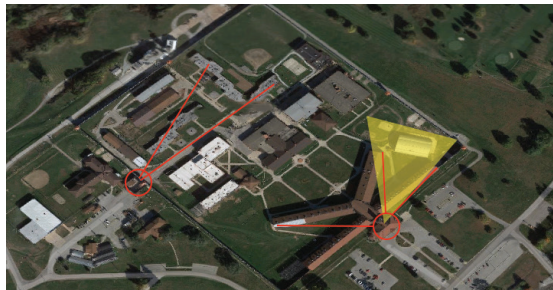


Equipment setup in tower

Antennas point toward a targeted area (e.g., housing unit) referred to a zone; an antenna's direction can change creating multiple zones.



Zone 1



Zone 2

Cell Intel Report Provides Actionable Data

Cell Intel findings example: 89 unique devices detected, 95 unique phone numbers dialed, and 57 text message attempts.

1 Cell Intel Assessment



29 Offenders Identified



Extracted

28 Cellular Devices & Peripherals

- 11 Cell Phones
- 6 SIM Cards
- 6 Cell Phone Batteries
- 5 Cell Phone Chargers

+ Green Dot Cards
Social Security Numbers

In this example, the Cell Intel report details were sent to the Internal Affairs department where various data sources were used, including the inmate telephone system to identify likely offenders. Targeted searches were conducted over a 2-day period where other extraction methods were used.